

Intermunicipal Trails Master Plan

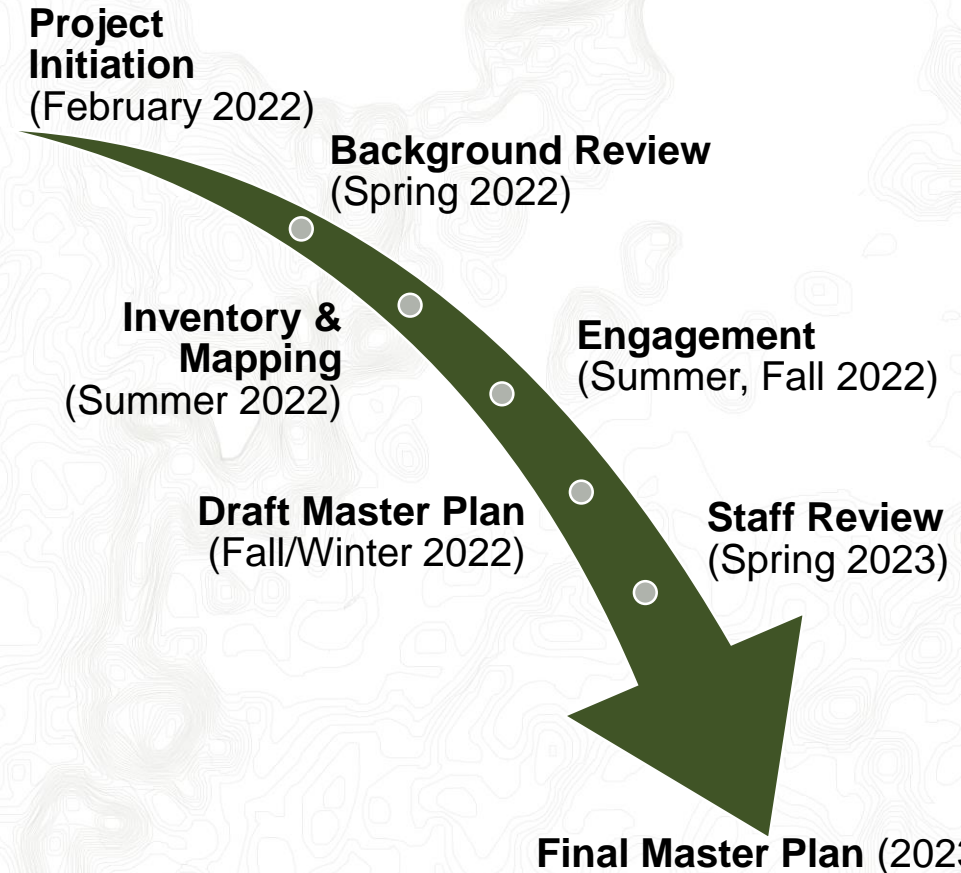


**A 10-Year Strategy for Sustainable and Desirable
Trail Experiences in the Region**



Planning Overview

What?	Intermunicipal Trails Master Plan (10-year plan)
Where?	Area and municipalities within M.D. of Bonnyville (south of Cold Lake Air Weapons range, inclusive of provincial crown land opportunities)
Who ?	M.D. Bonnyville <ul style="list-style-type: none">• Bowen Clausen, Director of Parks, Rec, & Culture City of Cold Lake <ul style="list-style-type: none">• Brad Schultz, Planner• Todd Worthington, Parks Manager Consulting Team: RC Strategies, McElhanney
Why?	Provide joint direction to guide and enhance trail-related recreation, active transportation, and tourism opportunities and services for residents and visitors.
Scope?	Non-motorized, motorized, summer, & winter trails



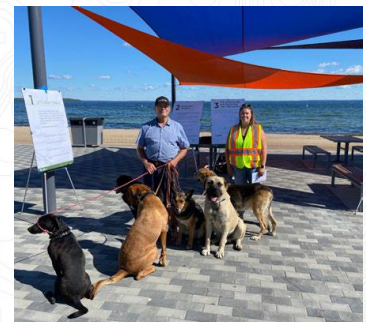
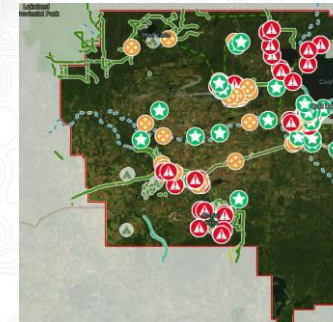
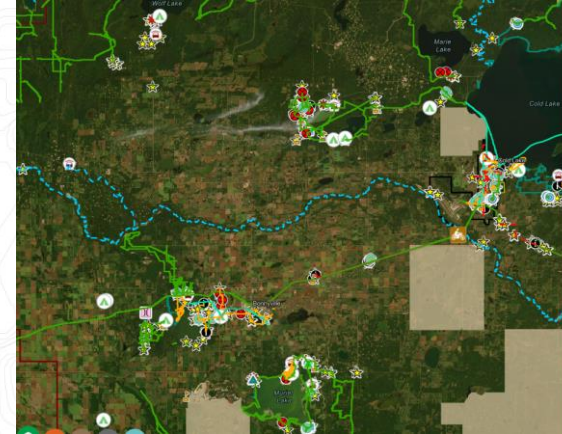
Mapping & Engagement

Inventory & Basemap

- Desktop
 - Data from M.D., City, GOA, rec org's, online platforms, local websites
- Field assessment
 - >1300km travelled in region
 - Topline assessment of key areas

Engagement

- Public Survey
- Online Mapping Tool
- Stakeholder interviews
- Indigenous invitations & conversation
- Staffed & unstaffed on-site "pop-ups"
- Municipal & GOA staff



What We Heard*

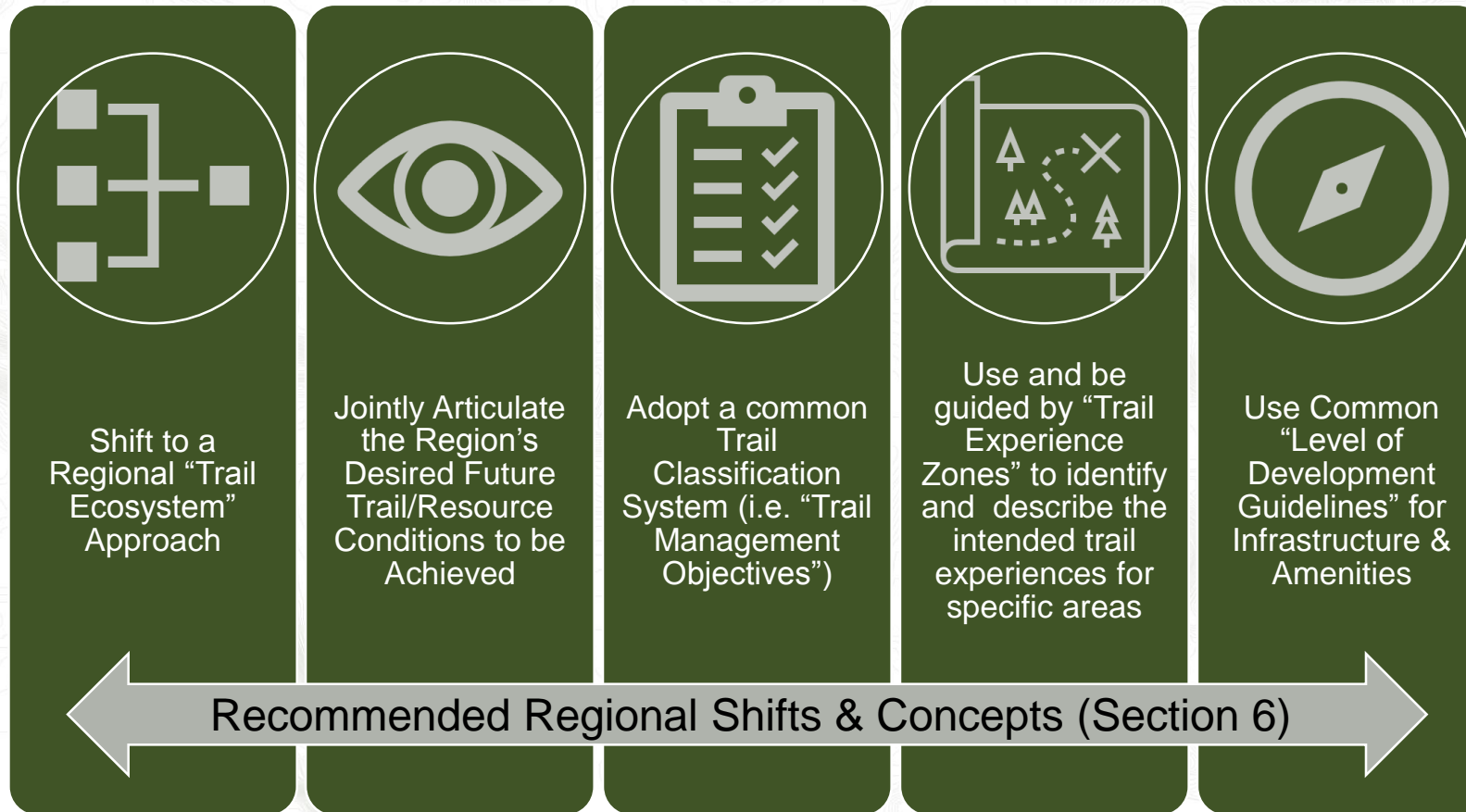
Residents are looking for:

1. Connection (local & long-distance)
2. Quality of Experience
3. Quality of Life
4. Safety & Security
5. Sustainability
6. Respectful planning & use
7. Efficient Implementation & Activation
8. Collaboration & Partnerships

* See October 2022 What We Heard Report



Future Trail System: Attributes & Management Concepts



Future Trail System: Desired Conditions (Section 6.2)

What Should
the Region
Strive to
Achieve?

Be a Unique & Inclusive “Must Experience” Trail Destination

Have A Sustainable Trail System

Have Strong Community Support for Trails & Trails Tourism

Have a Trail System that Contributes to Economic Growth & Diversification

Have Effective and Appropriate Partnerships, Collaboration & Resourcing



Image Credit – Whitefish Bike Retreat

Future Trail System: Recommended Strategies (Section 7)

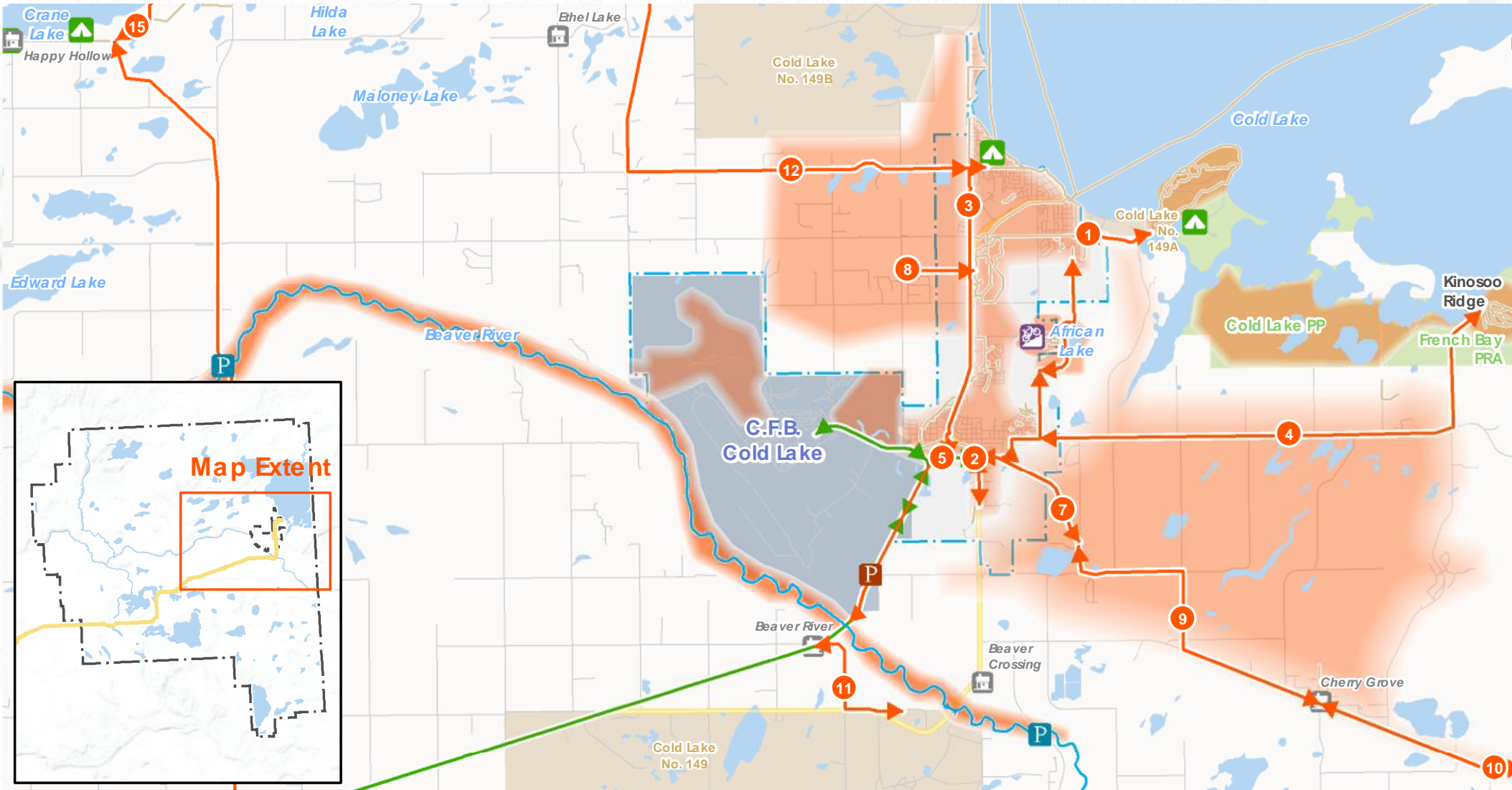


- Trail Experience Zone
- P Proposed Staging Area
- P Proposed Water Route Staging Area
- ←→ Priority Trail Connection
- ←→ Water Route
- ←→ Iron Horse Trail
- 13 Connection Number

Future System: Priority Connections & Zones

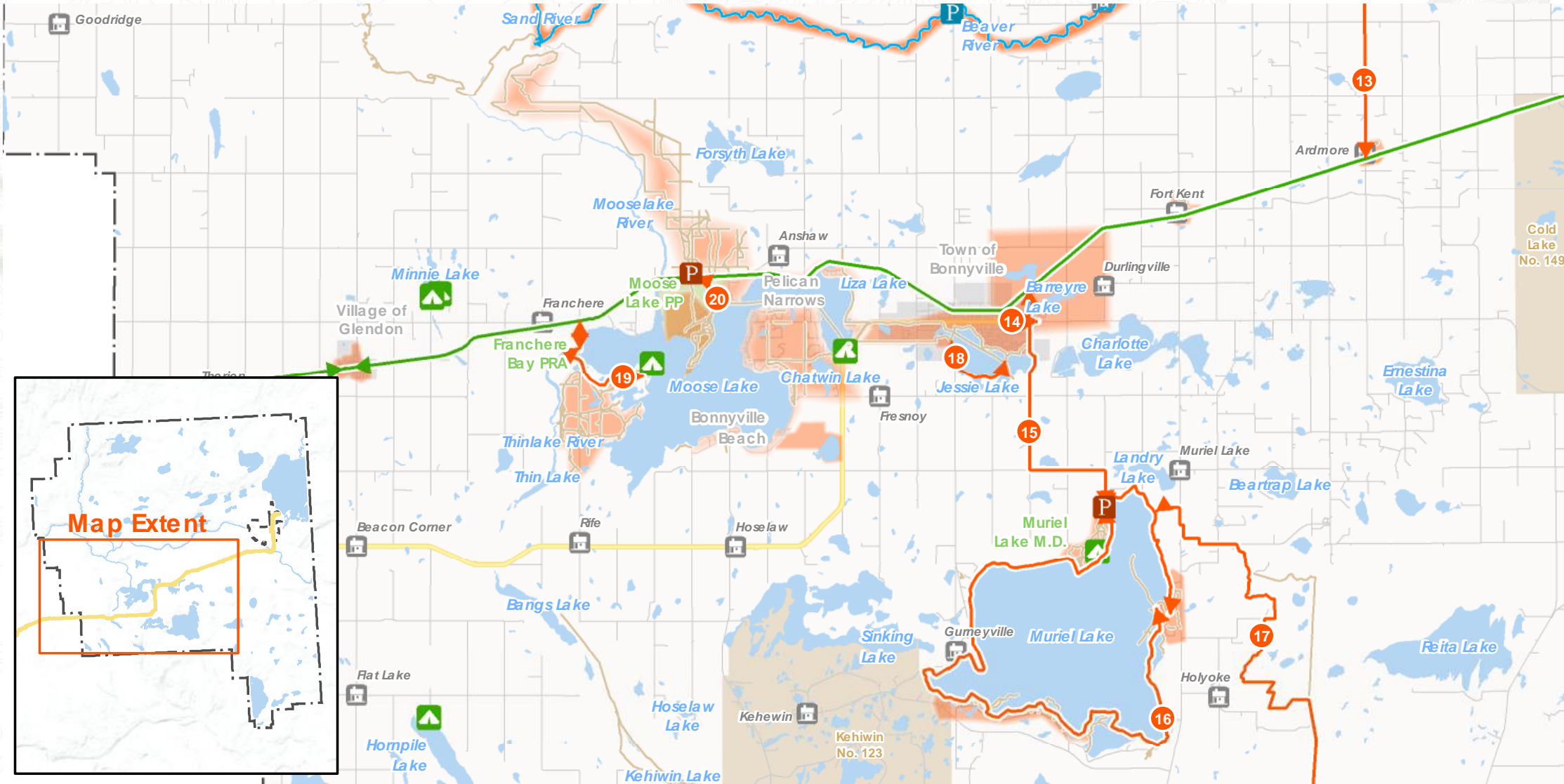
Cold Lake Area

(Section 7.3, p.135-7)



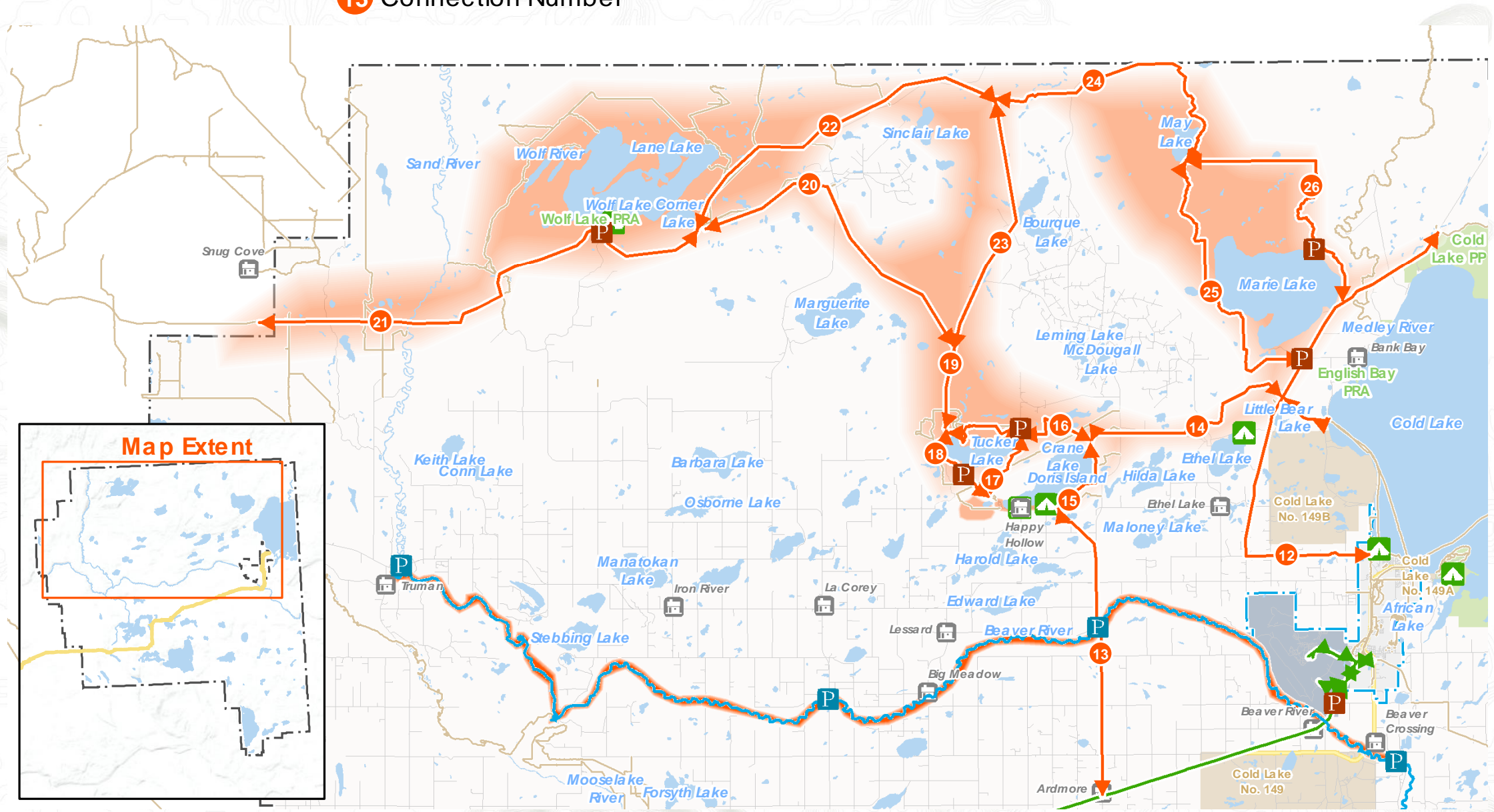
- Trail Experience Zone
- Proposed Staging Area
- Proposed Water Route Staging Area
- Priority Trail Connection
- Water Route
- Iron Horse Trail
- 13 Connection Number

Future System: Priority Connections & Zones South M.D. (Section 7.3, p.138-141)



- Trail Experience Zone
- Proposed Saging Area
- Proposed Water Route Saging Area
- Priority Trail Connection
- Water Route
- Iron Horse Trail
- 13 Connection Number

Future System: Priority Connections & Zones North M.D. (Section 7.3, p.142-5)



A photograph of a snowy landscape. A path, possibly a ski trail or a cleared road, leads from the foreground into the distance, flanked by evergreen trees. The snow is deep and has many footprints and tracks in it. The lighting suggests a bright day, with shadows cast by the trees.

Questions?

Justin Ellis
Partner

Kevin Wirtanen
Senior Consultant

RC Strategies