

# 2023 Q4 Review

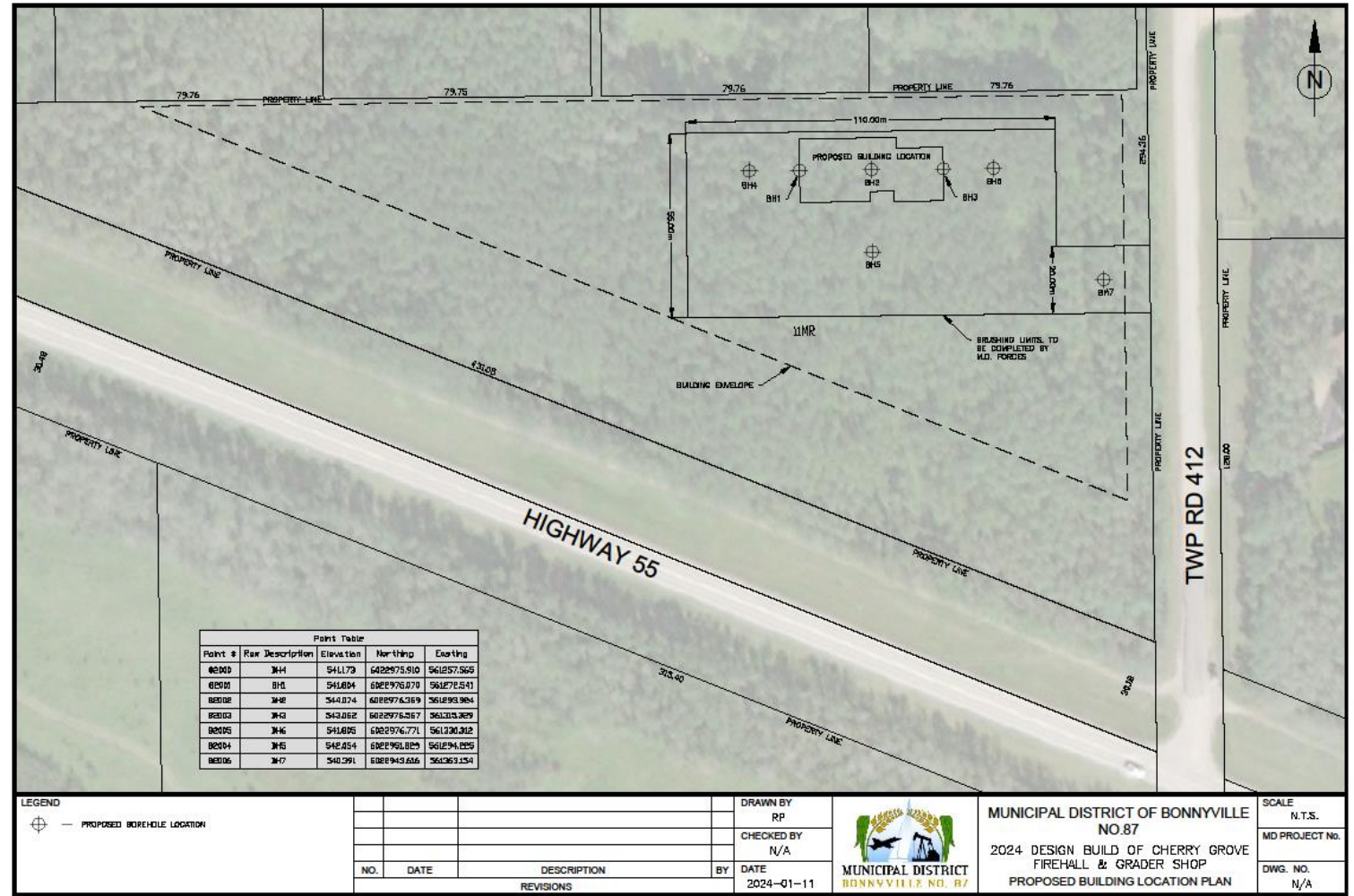
## CAPITAL PROJECTS


## FACILITIES, FLEET, AND UTILITIES

Lyle Treleaven – Manager of Capital Projects, Facilities, Fleet, & Utilities

# FIRE HALL AND GRADER SHOP IN CHERRY GROVE

THE SITE FOR THE NEW GRADER SHOP AND FIRE HALL IN CHERRY GROVE WAS SELECTED. IT WILL BE LOCATED ON RR 412 JUST NORTH OF HWY 55. THE M.D. OWNS THE 8 ACRE PARCEL WHERE THE NEW BUILDING WILL GO.



LEGEND ⊕ — PROPOSED BOREHOLE LOCATION	NO.	DATE	DESCRIPTION	BY	DRAWN BY RP		<b>MUNICIPAL DISTRICT OF BONNYVILLE NO.87</b> 2024 DESIGN BUILD OF CHERRY GROVE FIREHALL & GRADER SHOP PROPOSED BUILDING LOCATION PLAN	SCALE N.T.S.
	REVISIONS				CHECKED BY N/A			DATE 2024-01-11



## BRIDGE CONSTRUCTION

**BF 13135** ON RR 471 N OF HWY 55.  
CONTRACT WAS AWARDED TO  
LAFARGE CONSTRUCTION.

RR 471 IS A DEAD-END ROAD, SO AN  
MD-OWNED TEMPORARY BRIDGE WAS  
USED TO PROVIDE RESIDENT ACCESS  
DURING CONSTRUCTION

CONSTRUCTION WAS STARTED IN  
NOVEMBER AND WAS SUBSTANTIALLY  
COMPLETED IN DECEMBER.

SOME MINOR GRADING WORK WILL  
BE COMPLETED IN SPRING 2024.





## BRIDGE CONSTRUCTION

TEMPORARY BRIDGE AT BF  
13135 ON RR 471 NEAR  
IRON RIVER.

---





## BRIDGE CONSTRUCTION

**BF 74564** (BRIDGE CULVERT) ON RR 420 N OF TWP 655 (PLER ACCESS ROAD). CONTRACT WAS AWARDED TO CHARBERN LTD OF COLD LAKE.

RR 420 IS THE SOLE ACCESS TO PRIMROSE LAKE EVALUATION RANGE, SO THE BRIDGE CULVERT WAS CONSTRUCTED IN HALVES TO MAINTAIN ACCESS.

THE PHOTO SHOWS THE BYPASS CONSTRUCTED TO MAINTAIN ACCESS TO PLER.





## BRIDGE CONSTRUCTION

CONSTRUCTION WAS STARTED  
AND COMPLETED IN NOVEMBER  
2023.







**BRIDGE CONSTRUCTION**

RANGE ROAD 420 AFTER  
CONSTRUCTION WAS COMPLETED.



# EQUIPMENT DELIVERY

---

THE MD TOOK POSSESSION OF THIS NEW TRUCK-MOUNTED LIQUID DE-ICER SPRAYER FOR THE AIRPORT IN Q3. THERE WERE SOME ISSUES WITH THE SPRAYER NOZZLES, SO THE VENDOR WILL BE REPLACING THE ENTIRE UNIT.





# EQUIPMENT DELIVERY

THE MD TOOK POSSESSION  
OF 4 NEW FREIGHTLINER  
TRUCKS





A white dump truck is parked inside a large industrial garage. The truck is equipped with a front-mounted snow plow and a wing plow. The garage has a concrete floor with some stains and a large white door in the background. The truck has a black bumper and a black grille. The text "EQUIPMENT DELIVERY" is overlaid on the left side of the image.

# EQUIPMENT DELIVERY

EACH TRUCK CAME EQUIPPED  
WITH FRONT MOUNTED PLOW, A  
WING PLOW, A SANDING BOX,  
AND A REGULAR BOX.



# EQUIPMENT DELIVERY

THE M.D. ALSO TOOK  
POSSESSION OF A NEW TRI-AXLE  
PUP TRAILER.







# EQUIPMENT DELIVERY

THE MD TOOK POSSESSION OF THE  
REMAINING 2 NEW GRADER WING  
PLOWS. ALL 4 ARE NOW IN USE.





**QUESTIONS?**

---

