

APPENDIX B

# 2024 2nd Quarter Review

## **Transportation**

Monty Doonanco – Manager of Transportation



# Roadside Brushing & Ditch Improvements

- Completed 1 brushing project on RR 442 between TWP 614 and 615A.
- Contract brushing program is expected to begin in late August.



# Rip & Relay Program

In preparation for our Rip & Relay program, several project locations were drilled for geotechnical investigation, the results were then used in project planning and timeline forecasting.



# Gravelling Program

The gravelling program is underway, thus far having utilized 25,000 tonnes of gravel on the roads during the wet spring season.



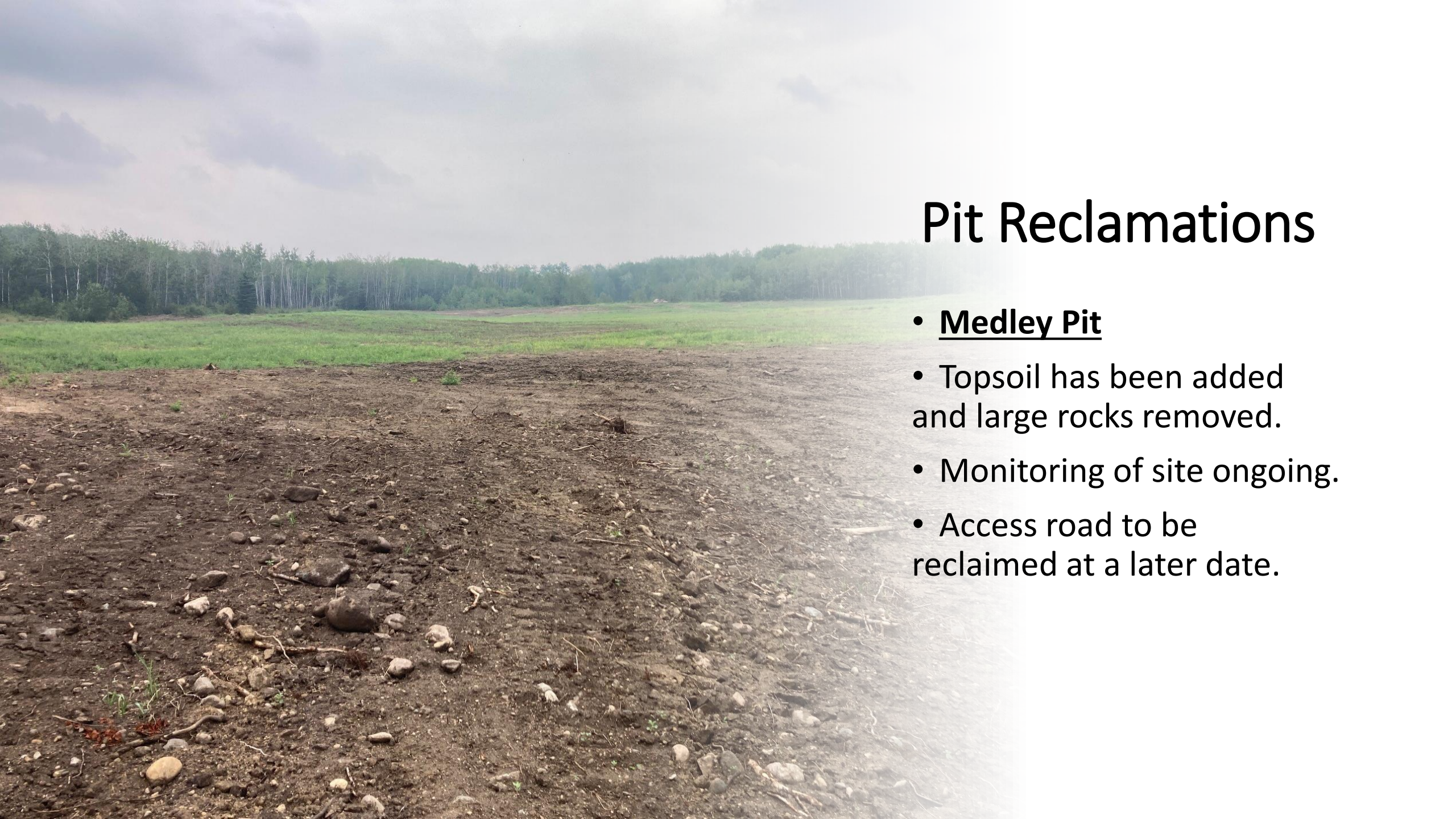
# Shoulder Pull Program

- 2 separate shoulder pull projects were completed during the 2<sup>nd</sup> quarter.
- The remaining projects will be completed throughout the summer and fall, as weather permits.



# Dust Suppressant Program

- The contract involving approximately 65km of gravel road over 3 years was awarded on April 18th.
- Applications of dust suppressant for this season's program will begin in July 2024.



# Pit Reclamations

- **Medley Pit**
- Topsoil has been added and large rocks removed.
- Monitoring of site ongoing.
- Access road to be reclaimed at a later date.

# Concerns Received

## Transportation & Infrastructure Concerns Logged in 2024

Category	1st Quarter Jan to Mar	2nd Quarter Apr to Jun	3rd Quarter Jul to Sep	4th Quarter Oct to Dec	Total
Airport	2	1			3
Brushing	0	5			5
Culvert	3	4			7
Dust Control	0	8			8
Flag	44	13			57
Flooding	0	13			13
Hardship	78	0			78
Industry	1	0			1
Non-profit snow removal	20	0			20
Online Flags	49	6			55
Other Concerns	7	29			36
Repeat Calls	0	0			0
Road Concerns	41	90			131
Signs	6	10			16
Thank you	6	0			6
Used Culverts	1	2			3
Windrow	3	0			3
	<b>261</b>	<b>181</b>	<b>0</b>	<b>0</b>	<b>442</b>



A vibrant rainbow arches across a cloudy sky, with its colors ranging from red to violet. The rainbow is set against a backdrop of grey and blue clouds. In the foreground, a dense line of green trees, including several tall evergreens, frames the bottom and sides of the image. The overall scene is a classic representation of a rainbow after a storm.

**Questions, comments, concerns?**