

**TC Energy**

450 - 1 Street S.W. Calgary, AB  
Canada, T2P 5H1  
chelsea\_troup@tcenergy.com



August 29, 2024

[SENT BY EMAIL]

NGTL GP Ltd. (NGTL GP), as general partner on behalf of NGTL Limited Partnership, (both indirectly wholly owned subsidiaries of TC Energy), is proposing to construct, own, and operate the Leming Lake Sales Lateral Loop (Sand Section) (the Project). The Project will be approximately 18 km of 20-inch outer diameter (NPS 20) pipe starting at an existing valve site from lands legally described as SW-21-065-07W4M and ending at an existing valve site at lands legally described as NW-11-065-09W4M. The Project route is located approximately 60 km northwest of Bonnyville, Alberta, in the M.D. of Bonnyville No. 87.

The purpose of the proposed Project is to address additional flow requirements based on interest expressed by NGTL GP customers for new and incremental NGTL System service.

NGTL GP anticipates filing an application under section 214 of the *Canada Energy Regulator Act* with its regulator, the Canada Energy Regulator (CER) in Q1 2025. Subject to CER approval, early clearing for the Project is anticipated to begin in Q4 2025 and construction in Q4 2026, with a commercial in-service date in April 2027.

If you would like further information regarding the CER's process, please contact TC Energy's Community Relations department at the contact information provided below. You may also contact the CER directly at 1-800-899-1265 or access their website at [www.cer-rec.gc.ca](http://www.cer-rec.gc.ca).

Once the pipeline goes into operation, it will become a component of the NGTL System, a network of over 24,000 km of pipeline that transports natural gas for use within Alberta and British Columbia and for delivery to other markets across North America.

TC Energy is a team of 7,000+ energy problem solvers working to move, generate and store the energy North America relies on. Today, we're taking action to make that energy more sustainable and more secure – while innovating and modernizing to reduce emissions from our business. Along the way, we invest in communities and partner with our neighbours, customers and governments to build the energy system of the future.

We strive to engage stakeholders early and often. We believe engagement is a two-way process and invite communities, landowners, and other interested stakeholders and rightsholders to share their questions and concerns with us so that we can provide information, follow up, and, where possible, incorporate input into our plans. Please do not hesitate to contact TC Energy's Community Relations department at [public\\_affairs\\_ca@tcenergy.com](mailto:public_affairs_ca@tcenergy.com) or at 1-855-895-8754 in regard to the proposed project.

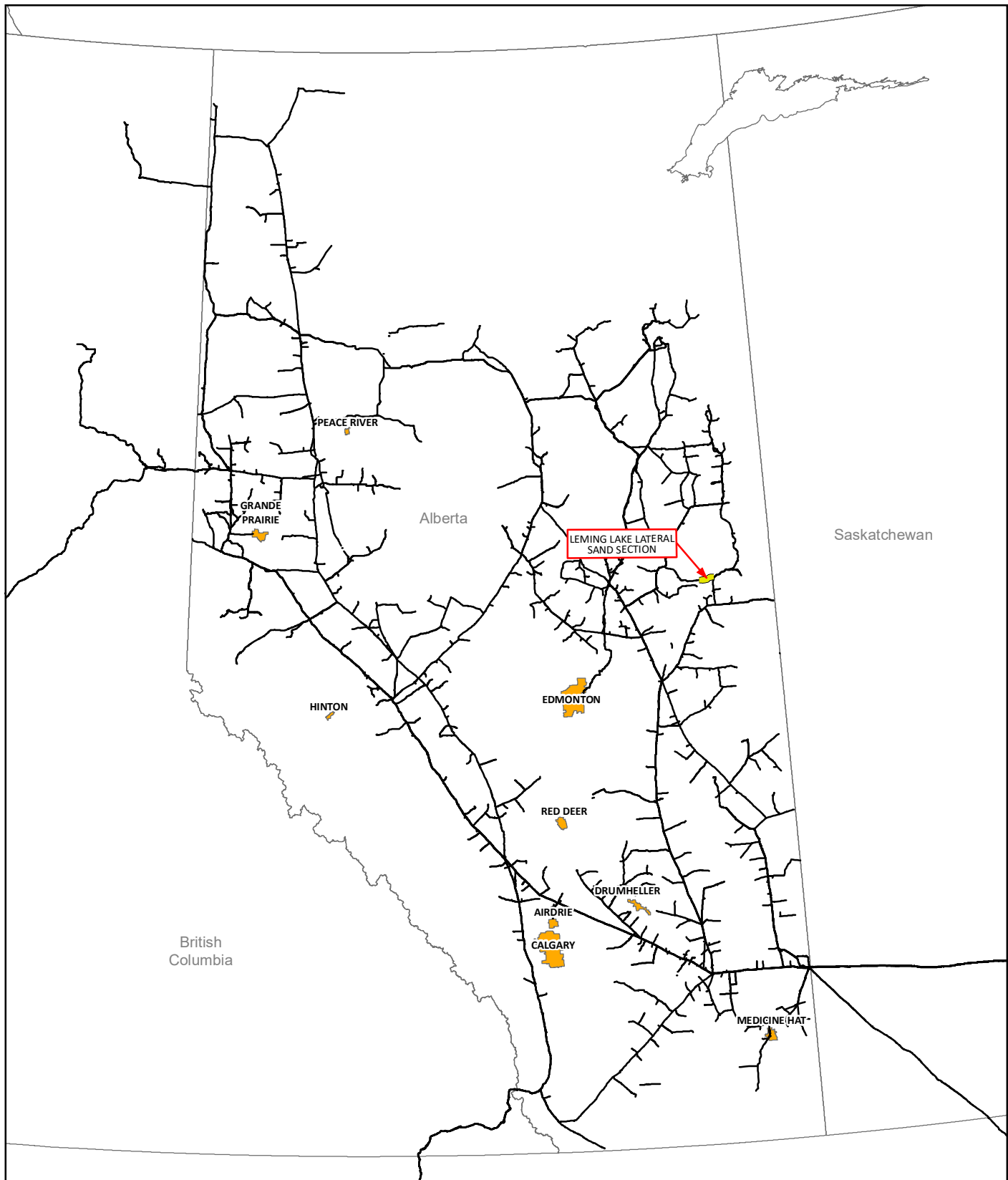
Sincerely,

A handwritten signature in black ink, appearing to read "Chelsea Troup".

Chelsea Troup  
Community Relations Advisor  
External Relations Canada

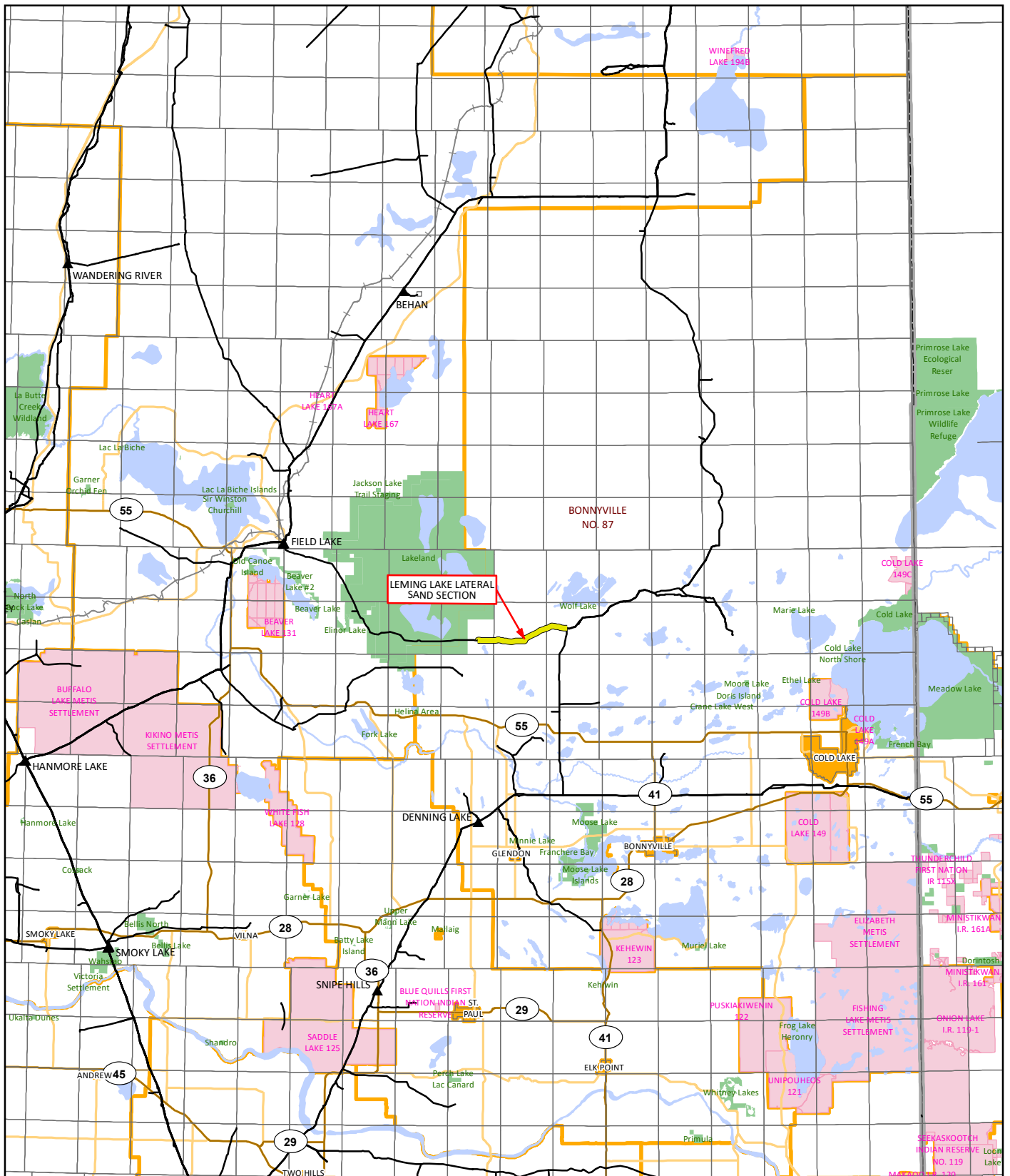
**Enclosures:**

Project Map  
Figure 1 Maps  
Engaging with our Stakeholders Factsheet  
CER Energy Projects, and You Factsheet



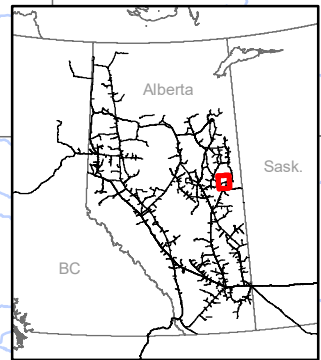
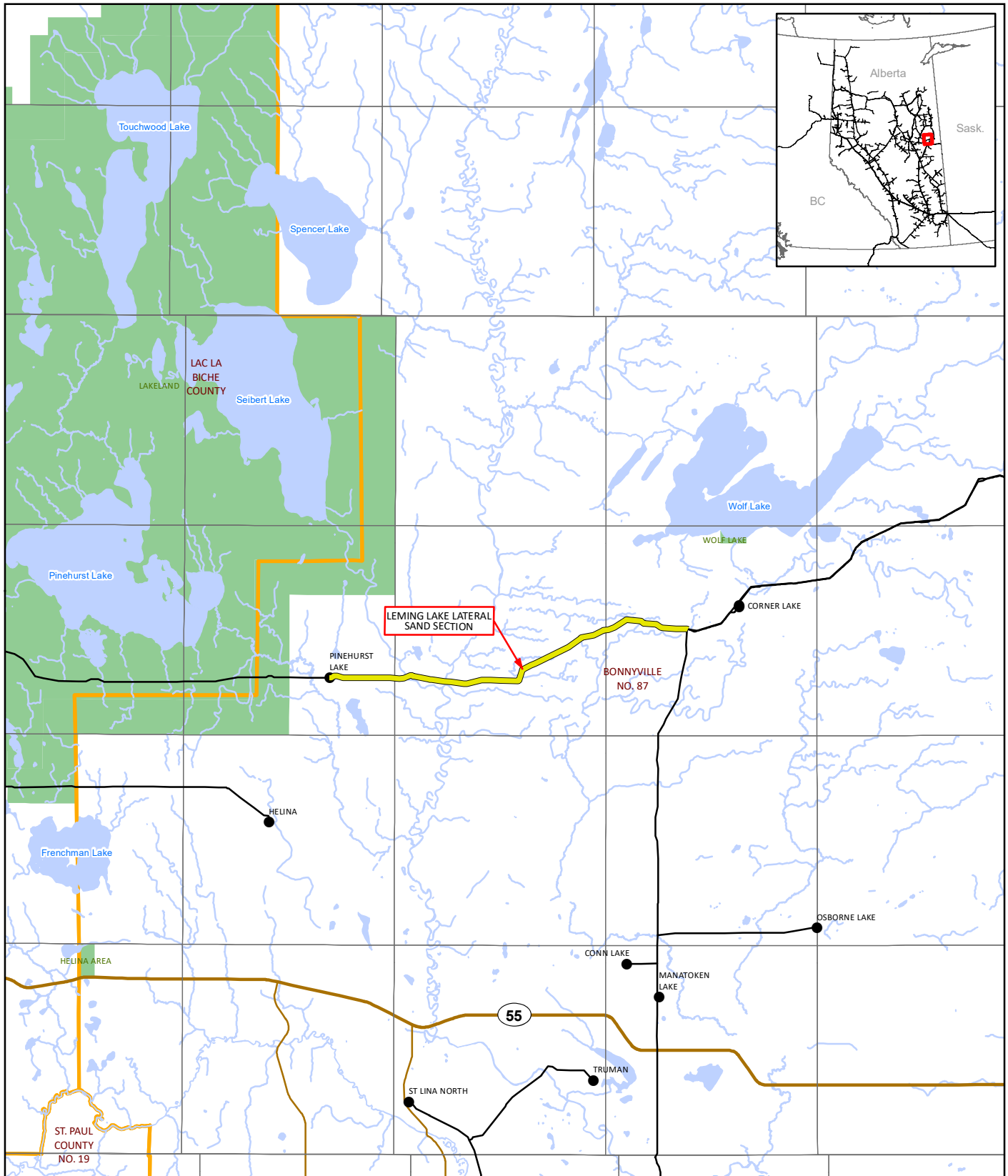
**TERMS OF USE:** The datasets used to create this map have been gathered from various sources for a specific purpose. TC Energy provides no warranty regarding the accuracy or completeness of the datasets. Unauthorized or improper use of this map, including supporting datasets is strictly prohibited. TC Energy accepts no liability whatsoever related to any loss or damages resulting from proper, improper, authorized or unauthorized use of this map and associated datasets and user expressly waives all claims relating to or arising out of use of or reliance on this map.

<b>LEMING LAKE LATERAL SAND SECTION</b>			Project Location TC Energy Pipeline City / Town Provincial Boundary														
Global					<table border="1" style="width: 100%; border-collapse: collapse;"> <tr> <td style="width: 60%;">LOCATION:</td> <td style="width: 20%;">REVISION: 1</td> <td style="width: 20%;">ISSUED DATE: 24-08-16</td> </tr> <tr> <td colspan="2">COORDINATE SYSTEM: NAD 1983 UTM Zone 11N</td> <td>ISSUE PURPOSE: IFU</td> </tr> <tr> <td colspan="3" style="text-align: center;"> </td> </tr> <tr> <td colspan="3">FILE NAME: T_0450_001_01_LemingLake_Sand.mxd</td> </tr> </table>	LOCATION:	REVISION: 1	ISSUED DATE: 24-08-16	COORDINATE SYSTEM: NAD 1983 UTM Zone 11N		ISSUE PURPOSE: IFU				FILE NAME: T_0450_001_01_LemingLake_Sand.mxd		
LOCATION:	REVISION: 1	ISSUED DATE: 24-08-16															
COORDINATE SYSTEM: NAD 1983 UTM Zone 11N		ISSUE PURPOSE: IFU															
FILE NAME: T_0450_001_01_LemingLake_Sand.mxd																	
CARTOGRAPHER:	RC	24-08-16															
REVIEWER:	RC	24-08-16															
APPROVER:																	



**TERMS OF USE:** The datasets used to create this map have been gathered from various sources for a specific purpose. TC Energy provides no warranty regarding the accuracy or completeness of the datasets. Unauthorized or improper use of this map, including supporting datasets is strictly prohibited. TC Energy accepts no liability whatsoever related to any loss or damages resulting from proper, improper, authorized or unauthorized use of this map and associated datasets and user expressly waives all claims relating to or arising out of use of or reliance on this map.

<b>LEMING LAKE LATERAL SAND SECTION</b>			<ul style="list-style-type: none"> <li><span style="color: yellow;">—</span> Project Location</li> <li><span style="color: blue;">—</span> Rivers / Lakes</li> <li><span style="color: green;">—</span> Protected Area</li> <li><span style="color: black;">—</span> TC Energy Pipeline</li> <li><span style="color: orange;">—</span> Railways</li> <li><span style="color: brown;">—</span> Primary Highways</li> <li><span style="color: pink;">—</span> City / Town</li> <li><span style="color: lightblue;">—</span> First Nations Land</li> <li><span style="color: orange;">—</span> Secondary Highways</li> <li><span style="border: 1px solid orange; display: inline-block; width: 10px; height: 10px;"></span> County</li> </ul>	 	 <b>TC Energy</b>																
<table border="1" style="width: 100%; border-collapse: collapse;"> <tr> <td colspan="2" style="text-align: center;">Regional</td> <td></td> </tr> <tr> <td>CARTOGRAPHER:</td> <td>RC</td> <td>24-08-16</td> </tr> <tr> <td>REVIEWER:</td> <td>RC</td> <td>24-08-16</td> </tr> <tr> <td>APPROVER:</td> <td></td> <td></td> </tr> </table>						Regional			CARTOGRAPHER:	RC	24-08-16	REVIEWER:	RC	24-08-16	APPROVER:			<table border="1" style="width: 100%; border-collapse: collapse;"> <tr> <td>LOCATION:</td> <td>REVISION: 1</td> <td>ISSUED DATE: 24-08-16</td> </tr> <tr> <td colspan="2">COORDINATE SYSTEM: NAD 1983 UTM Zone 12N</td> <td>ISSUE PURPOSE: IFU</td> </tr> </table>	LOCATION:	REVISION: 1	ISSUED DATE: 24-08-16
Regional																					
CARTOGRAPHER:	RC	24-08-16																			
REVIEWER:	RC	24-08-16																			
APPROVER:																					
LOCATION:	REVISION: 1	ISSUED DATE: 24-08-16																			
COORDINATE SYSTEM: NAD 1983 UTM Zone 12N		ISSUE PURPOSE: IFU																			
			<p>MAP NUMBER: T_0450_002_01_LemingLake_Sand.mxd</p>																		



**TERMS OF USE:** The datasets used to create this map have been gathered from various sources for a specific purpose. TC Energy provides no warranty regarding the accuracy or completeness of the datasets. Unauthorized or improper use of this map, including supporting datasets is strictly prohibited. TC Energy accepts no liability whatsoever related to any loss or damages resulting from proper, improper, authorized or unauthorized use of this map and associated datasets and user expressly waives all claims relating to or arising out of use of or reliance on this map.

<b>LEMING LAKE LATERAL SAND SECTION</b>			Project Location	Primary Highways	N	
			Delivery Meter Station	Secondary Highways		
Detail			Receipt Meter Station	River / Lake	LOCATION: _____ REVISION: 1 ISSUED DATE: 24-08-16	
CARTOGRAPHER: RC	24-08-16		TC Energy Pipeline	Protected Area	COORDINATE SYSTEM: NAD 1983 UTM Zone 12N	
REVIEWER: RC	24-08-16		County		ISSUE PURPOSE: IFU	
APPROVER:					0 1.25 2.5 5 7.5 10 km	
					MAP NUMBER: T_0450_003_01_LemingLake_Sand.mxd	

# LEMING LAKE SAND SECTION PROJECT

## Overview

TC Energy's NGTL System delivers energy to millions of North Americans every day as an essential part of the TC Energy pipeline network. NGTL GP is proposing to construct, own and operate the Leming Lake Sales Lateral Loop (Sand Section) Project ("Project") to enhance natural gas transportation to meet growing demand in Alberta, providing secure and reliable energy. This Project will support natural gas delivery to the Oil Sands.

NGTL GP anticipates filing an application with the Canada Energy Regulator (CER) under Section 214 of the Canadian Energy Regulator Act in Q1 2025, with a commercial in-service date in Q2 2027.

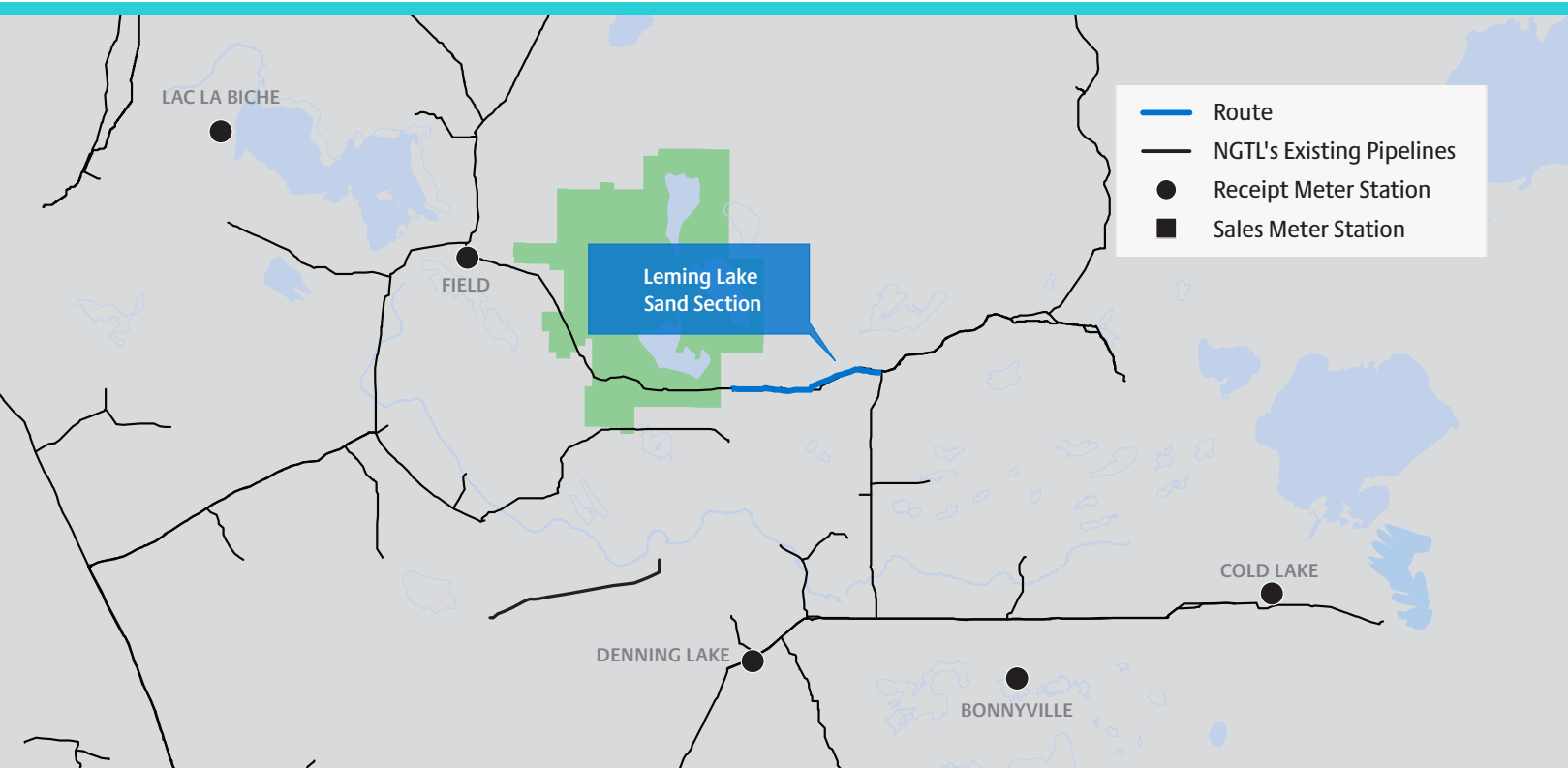
## Project Scope

The proposed Sand Section consists of approximately 18 kilometers (km) of 20-inch diameter (NPS 20) located on Crown Land, beginning at SW-21-65-7-W4M and ending at NW-11-65-9-W4M, approximately 60 km northwest of Bonnyville, in the M.D. of Bonnyville No. 87.

## Anticipated Project Schedule

Q3 2024	Engagement start
Q4 2024	Project notification submission to CER
Q1 2025	Section 214 Application filing to CER
Q4 2025	Early clearing work
Q4 2026	Construction start
Q2 2027	Commercial in-service

..... TC Energy periodically provides information beginning at the early stages of project development, including prospecting, and continuing throughout the life of assets. The information provided is intended to inform stakeholders and Indigenous groups of our proposed activities and provide the opportunity to provide meaningful input or feedback. As planning progresses and new information becomes available, details may change from the time of this printing.





## Project Benefits

The proposed Project will deliver well-designed and constructed infrastructure that provides short- and long-term economic benefits and also strengthen the economy at a local, provincial and national level:

**Employment opportunities** - Construction will require the services of equipment operators, welders, mechanics, truck drivers, labourers and more.

**Business opportunities** - Pipeline construction will create demand for local goods and services, including food and accommodation, hardware, industrial parts, automotive parts and servicing, fuel and more.

**Investment in local communities** - Through our engagement with local communities, we will identify areas where we can help build stronger, more vibrant communities through initiatives with community partnerships in the areas of safety, community and environment.

**Annual revenue to support local services** - Project construction will result in tax payments to municipal, provincial and federal governments. When the Project is operational, annual tax payments will help support schools and hospitals, emergency services, recreation facilities, recycling programs and other local programs vital to sustaining communities.

## Contact us

Contact us with any questions:

1-855-895-8754  
public\_affairs\_ca@tcenergy.com

Or write to us at:

**TC Energy**  
450 - 1 Street S.W. Calgary, AB  
Canada, T2P 5H1

For further information regarding the CER's process, please contact us or contact the regulator directly:

Canada Energy Regulator  
Suite 210, 517 - 10 Avenue S.W. Calgary, AB  
Canada, T2R 0A8  
1-800-899-1265

[TCEnergy.com](https://www.tcenergy.com)







# ENGAGING WITH OUR STAKEHOLDERS

With more than 65 years' experience, TC Energy is a leader in the responsible development and reliable operation of North American energy infrastructure including natural gas and liquids pipelines, power generation and gas storage facilities. We safely deliver the energy that millions of North Americans rely on every day to power their lives and fuel industry.

## Responsible stakeholder and rightsholder engagement

Guided by our values of safety, innovation, responsibility, collaboration, and integrity, we are proud of the positive relationships we have built with our neighbours for the last 65 years. We recognize that ensuring Indigenous groups, as rightsholders, and our stakeholders are engaged and respected is critical to TC Energy's success.

We are committed to sharing information and seeking public input which results in better plans – for us, stakeholders, rightsholders and communities as a whole. We document the entire stakeholder engagement process including the issues raised by stakeholders and rightsholders, along with the ways we address these issues.

## Commitment to engagement and addressing concerns

Our approach to consultation and engagement with stakeholders, landowners, and Indigenous groups is focused on understanding concerns and addressing issues related to our projects and operations. We engage and consult early and often, invite

feedback, provide updates and address concerns throughout the regulatory process and throughout operations.

Our preference for addressing concerns is through direct and respectful discussion. Issues received or identified during these discussions are systematically tracked and followed to promote mutual resolution. If mutual resolution is not achievable, parties may consider use of the Canada Energy Regulator's (CER) collaborative Alternative Dispute Resolution (ADR) process.

## Engaging Indigenous groups

Building and maintaining relationships with Indigenous groups near our proposed projects and existing facilities has long been an integral part of our business. We recognize Indigenous groups as rightsholders who have a distinct relationship with the land. We know that our activities have the potential to affect the lives of Indigenous groups in a tangible way.

We work closely with Indigenous groups to understand the potential effects of the project on the exercise of Indigenous rights and any other interests of Indigenous peoples in the project area. The information we work with Indigenous groups to collect is considered in the project planning process and evaluated by provincial and federal authorities, including the CER, as part of their regulatory review.

We aim to conduct our activities in a way that fosters mutual understanding and benefit – this includes working with communities to identify and manage potential effects of our activities and provide enduring economic opportunities. TC Energy also provides business, employment, training opportunities, and supports community-led initiatives of Indigenous groups that focus on safety, community, environment and education.



## Community benefits

Our projects offer long-term economic benefits and help strengthen the economy on a local, provincial and national level:

- **Employment and business opportunities** – Construction requires the services of equipment operators, welders, mechanics, truck drivers, labourers, and more, as well as creates demand for local goods and services. Vendors interested in working with us can visit [TCEnergy.com](https://www.tceenergy.com) to register as an interested local service provider. We award contracts to qualified pipeline construction contractors and work with them to provide local employment opportunities.
- **Annual revenue to support local services** – Project construction results in tax payments to all levels of government. When the project is operational, annual tax payments help support schools, hospitals, emergency services and other local programs vital to communities.
- **Investment in local communities and Indigenous groups** – Giving back to the communities where we operate has always been part of our culture. Whether it's partnering with community groups, supporting local initiatives or encouraging our employees to be involved in their neighbourhoods, the goal of our Build Strong community investment program is to build strong and vibrant communities across North America. Visit [TCEnergy.com/BuildStrong](https://www.tceenergy.com/BuildStrong) for more information.

## Managing our environmental footprint

Whether it's designing, building, or operating energy infrastructure, we are committed to being responsible environmental stewards on the land we share – and our environmental principles of stewardship, protection and performance help guide our decisions. As part of our commitment, and in support of the regulatory process, we assess potential effects that may be associated with

construction and operation of a proposed project. Some examples of possible effects associated with meter station, compressor station or pipeline projects include potential effects to soil, water, fish, and wildlife, air quality, and noise.

The Environmental and Socio-Economic Assessment prepared for a proposed project considers potential effects on communities and groups whose interests may inform our planning process, including the potential for a project to impact diverse groups of people. We propose mitigation and enhancement measures and evaluate the significance of residual effects once these measures are implemented. An Environmental Protection Plan is also developed to identify the necessary measures to be used during construction, and the best practices we use to guide operations of the assets throughout their life cycle to manage effects and maintain equivalent land capability.

## Route selection

TC Energy employs a systematic and thorough route selection process using a variety of considerations, such as:

- desktop studies
- helicopter surveys
- ground verification and on-the-ground field survey
- engineering, geotechnical and environmental field studies
- co-location of the pipeline along existing disturbances and corridors to minimize new footprint

Route selection takes into account the objectives of minimizing the total route length or land requirements, meeting applicable regulatory requirements and reducing the environmental footprint, while carefully assessing overall construction complexity and our ability to meet customer needs.

Feedback received through stakeholder, landowner and Indigenous engagement informs the assessment of proposed routes and sites.





## What to expect during and after construction

The planning that goes into the construction and operation of our pipeline projects reflects commitments we've made and conditions we receive during the regulatory review process. We track and report our progress on regulatory conditions with the CER and follow up on the commitments we've made to honour the relationships we've built with Indigenous groups, communities and landowners.

During pipeline construction there is an increase in traffic in and around the project area as well as heavy equipment onsite for earthworks, material handling/hauling, welding and testing. We adhere to construction plans and the Environmental Protection Plan to ensure that the impacts of construction activities on communities are minimized.

Many of our projects include the use of temporary work space and, if required, workforce accommodations are built to support construction. If our plans include these features, we begin the conversation with potentially affected stakeholders early on to hear and understand community interests.

Access to-and-from site is planned based on a number of factors including finding the safest and most efficient routes to our work site, existing infrastructure, new infrastructure required to support construction and municipal planning. Access planning is refined throughout project development and final plans are communicated to communities prior to starting work.

Once construction is completed, the impacted land area – including our temporary work space and workforce accommodation areas – is reclaimed to an equivalent land capability so that it can support various uses such as wildlife habitat or agricultural purposes, similar to the ability that existed previously. Measures are taken to prevent topsoil/surface material loss from wind and water erosion and to establish a vegetative cover native to the surrounding vegetation and land use. After the facilities are constructed, there will be minimal traffic associated with ongoing operations and maintenance.

On freehold lands, landowners have the right to fully use and enjoy the right of way subject to the terms of the right-of-way agreement, and CER and Damage Prevention Regulations. To provide public safety and to protect property and the environment, written consent from TC Energy is required for certain activities on the pipeline right of way and within the 30-metre prescribed area. These activities include but are not limited to: operating motor vehicles or

mobile equipment, reducing or adding soil cover and any excavation or ground disturbance. Stakeholders may contact TC Energy with at least 10 working days' notice to apply for written consent at [writtenconsent.transcanada.com](https://www.tcenergy.com/writtenconsent-transcanada.com). After written consent has been received, request a locate by visiting [ClickBeforeYouDig.com](https://www.clickbeforeyoudig.com) or calling the appropriate provincial One-Call Centre.

At the end of a pipeline's lifecycle, the asset is taken out of service with as much thought and care as when it was proposed and constructed. We follow the Canada Energy Regulator's processes for end-of-life planning. More information about pipeline end-of-life is available on our website at [TCEnergy.com/about/energy-101/lifecycle-of-a-pipeline](https://www.tcenergy.com/about/energy-101/lifecycle-of-a-pipeline).

## Ensuring our pipelines are safe

Our safety program starts before construction. We use only high-quality materials, the latest proven technologies and industry-leading practices to ensure the integrity of our pipelines before they go in the ground. We are a leader in North America in the use of automatic welding and ultrasonic testing technologies to construct pipelines. These technologies ensure high quality welds are made and every weld is inspected by qualified independent inspectors during construction. Prior to placing a pipeline in service, it is hydrostatically tested with water at a higher pressure than it will see during operations. In addition, pipeline inspection tools with high resolution sensors are run through the pipeline to check for any other irregularities prior to flowing natural gas.

Once operational, we use state-of-the-art leak detection systems, safety features such as shut-off valves and provide highly specialized training for people working on our assets. Our pipeline systems are monitored 24 hours a day, 365 days a year by trained operators in our Operations Control Centres who manage the most sophisticated pipeline monitoring equipment and technology available. Our industry-leading asset integrity programs manage our pipeline and facilities for their entire life cycle to ensure they provide safe and reliable energy to consumers throughout North America.



## Emergency preparedness and response

Our goal is to ensure that our pipeline and energy facilities operate safely every day and that the public, our employees, and the environment are protected during the unlikely event of incident involving our assets. All TC Energy safety initiatives are designed to advance one goal: Zero is Real. We are proud to have an industry leading safety record and continue to work towards our goal of zero safety incidents. Being prepared for the rare cases when something does go wrong is part of the commitment to ensuring the safety of the communities where we live and operate.

At the first sign of any potential issue on our pipeline systems, our control centre operators can stop the flow of product through the pipeline in minutes and investigate. If an irregular condition is detected, pipeline operators immediately dispatch emergency personnel to the scene to investigate. The pipeline is not restarted until it has been confirmed on site by qualified personnel that it is safe to do so.

In the unlikely event of an incident, all our assets have specific Emergency Response Plans that outlines the steps we'll take to respond. Our Emergency Preparedness and Response team is focused on quickly and effectively responding to emergencies and mitigating any impacts that may have occurred to public safety, property or the environment in a timely manner.

If there is an incident, we work closely with authorities, emergency responders and the media to ensure local residents are safe and aware of the situation.

**In the event of an emergency, please contact TC Energy's 24-hour emergency line at 1-888-982-7222.**

Find out more by visiting [TCEnergy.com](https://www.tcenenergy.com).

## Contact us

Contact us with any questions:

Phone 1-855-895-8754  
Email [public\\_affairs\\_ca@tcenergy.com](mailto:public_affairs_ca@tcenergy.com)  
Web [TCEnergy.com](https://www.tcenenergy.com)

Or write to us:

**TC Energy**  
450 – 1 Street S.W. Calgary, Alberta  
Canada, T2P 5H1

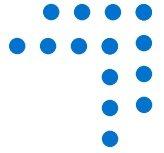
For further information regarding the CER's processes, please contact us or contact the regulator directly:

**Canada Energy Regulator**  
Suite 210, 517 – 10 Avenue S.W. Calgary, Alberta  
Canada, T2R 0A8  
Phone 1-800-899-1265  
Web [www.cer-rec.gc.ca](https://www.cer-rec.gc.ca)  
Email [info@cer-rec.gc.ca](mailto:info@cer-rec.gc.ca)

### Vendors

Vendors interested in working with us can visit [TCEnergy.com](https://www.tcenenergy.com) to register as an interested local service provider.

[TCEnergy.com/operations/vendors/](https://www.tcenenergy.com/operations/vendors/)



TC Energy periodically provides information beginning at the early stages of project development including prospecting, continuing throughout the life of assets. The information provided is intended to give people the opportunity for meaningful input and inform stakeholders of our proposed activities. Please be aware that as planning progresses, new information becomes available and details may change from the time of this printing. Please contact TC Energy with any questions. TC Energy considers the language needs of those persons and communities potentially affected by its projects, and aims to identify and use where appropriate, both French and English during its engagement activities in order to help ensure their effectiveness.





# Safety is everyone's responsibility



**Safety is everyone's responsibility. For us, it is our job. Protecting you and the environment is the CER's priority. Here are a few things you should know.**

**Damage prevention:** If you live or work near a pipeline, find out how to safely do your activities. Before you dig near a pipeline, get the company's consent. Visit [clickbeforeyoudig.com](http://clickbeforeyoudig.com) to locate buried pipelines or utility lines.

**Compliance and enforcement:** CER inspection officers regularly go out into the field to verify and enforce requirements and standards in place to keep people and the environment protected.

**Emergency management:** In an emergency, we make sure companies respond in a way that protects people, property, and the environment. We expect them to take the action needed to stop spills, manage the incident, and clean up and pay for any damage done.

## Find out more

Find out more about the Canada Energy Regulator by visiting us online at [www.cer-rec.gc.ca](http://www.cer-rec.gc.ca).

Be sure to follow us on social media for the latest updates.



For copies of any CER publication or for more information, contact us:

ONLINE: [www.cer-rec.gc.ca](http://www.cer-rec.gc.ca)  
EMAIL: [info@cer-rec.gc.ca](mailto:info@cer-rec.gc.ca)  
TOLL FREE: 1-800-899-1265

Write us or visit our library at:

**Canada Energy Regulator**  
Suite 210, 517 Tenth Avenue SW  
Calgary, Alberta T2R 0A8

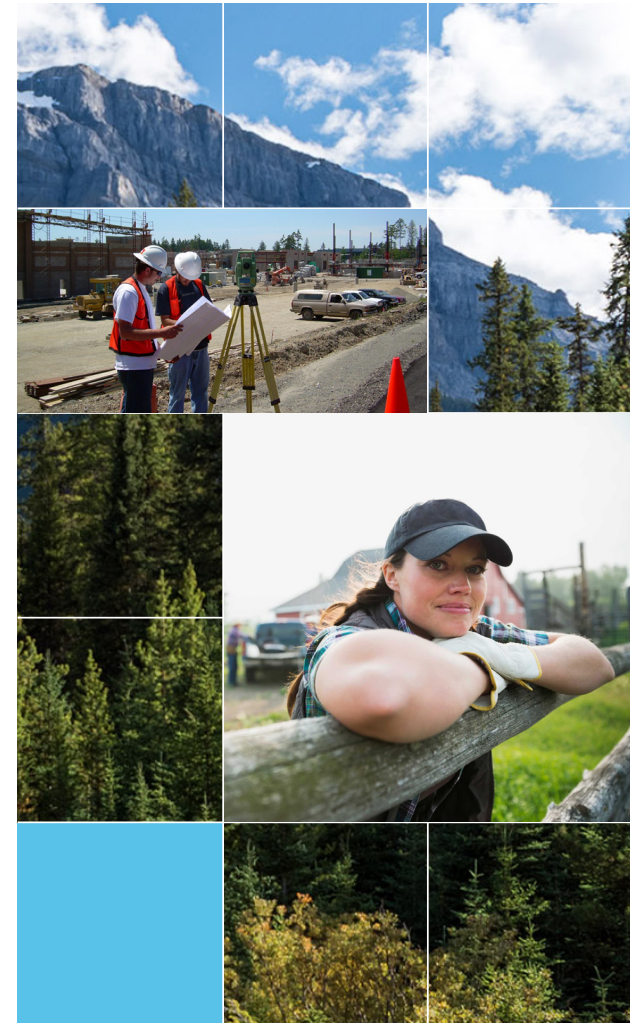
© Her majesty the Queen in the Right of Canada 2020 as represented by the Canada Energy Regulator

### The CER, Energy Projects and You

**Cat. No.** NE23-210/2020E (PDF)  
**ISBN** 978-0-660-34901-5

**Cat. No.** NE23-210/2020E (Paper)  
**ISBN** 978-0-660-34902-2

## The CER, Energy Projects, and You





The Canada Energy Regulator (CER) oversees federally regulated pipelines, power lines, and offshore renewable energy projects.



When you hear from a company about a project being proposed on your land, you may have questions and concerns. We understand.

---

Explore the topics from this brochure on our website, [www.cer-rec.gc.ca](http://www.cer-rec.gc.ca).

Simply search for the **bolded** words for more information and *italicized* words for forms and templates.



## Be part of the project – work with the company



**Contact the company first. Your questions and concerns help shape the company's project. Companies are required to listen and respond to your comments and concerns. They must also identify the possible effects on nearby people, property, and the environment when it applies to the CER. Here are some opportunities to work with the company.**

- **Early engagement:** We expect companies to engage early about a project and demonstrate to us how it considered the information it gathered. Let the company know whether the project may affect you. The company will let potentially affected people and communities know when it files an application with the CER.
- **Land agreements:** The company must tell you what land it is planning to use to construct, operate, and maintain its proposed project. It may propose a land agreement with you to confirm the lands the company can work on.
- **Land use compensation:** The company must compensate you for land acquisition, restricted use of lands, or damages caused by its activities.



## CER project review – be heard

**Before the company can build or abandon a federally regulated pipeline, power line, or offshore renewable energy project, it must apply to the CER. We will review and assess the proposed project, including the company's engagement activities and potential effects on people, property, and the environment.**

- **Statement of concern:** We rely on you to bring forward your concerns and views. If you have concerns about a project, you can send us a *Statement of Concern* within 30 days of being notified that the company has filed an application. Your concerns will guide the CER in planning its review.
- **Projects and hearings:** The CER may hold a public hearing for facilities applications. If you have questions about the **hearing process**, contact a **process advisor**.



## CER processes in place to help you

- **Land Matters Advisory Service:** If you have questions about land matters with respect to CER-regulated energy projects and processes, email [LMAS@cer-rec.gc.ca](mailto:LMAS@cer-rec.gc.ca).
- **Alternative dispute resolution:** Any time during the life of a project, if you are unable to resolve concerns directly with the company, you can email [ADR-RED@cer-rec.gc.ca](mailto:ADR-RED@cer-rec.gc.ca) to ask a specialist to work with you and the company to find solutions.
- **Complaint resolution:** If you are unable to resolve an issue with a CER-regulated company, facility, or activity on lands you use or own, you can send us a completed *Complaint Form*.