



Many Islands Pipe Lines (Canada) Limited

Ankit Saxena  
832 – 1777 Victoria Avenue  
Regina, SK S4P 4K5  
T: (306) 777-9736  
asaxena@saskenergy.com

January 29, 2025

Greg Sawchuk  
MD of Bonnyville  
4905 - 50th Ave, Bag 1010  
Bonnyville, AB T9N 2J7  
(780) 826-3171

**Re: Many Islands Pipe Lines (Canada) Limited Emergency Procedures Manual Update**

You have received this information as you have been identified as a potential response agency in the event of an incident on the Many Islands Pipe Lines (Canada) Limited (MIPL) gas line system. A wholly owned subsidiary of SaskEnergy Incorporated, MIPL is committed to upholding the highest standard of safety for its employees and the public which includes training to recognize and handle emergency situations quickly and correctly.

The enclosed public awareness pamphlet is based on our Emergency Procedures Manual. Please review and familiarize yourself with the information in the pamphlet.

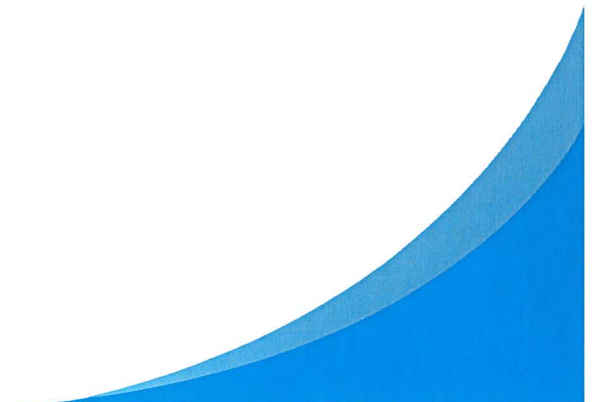
If you have any questions, please let me know.

Sincerely,

A handwritten signature in blue ink, appearing to read "Ankit Saxena", with a horizontal line underneath.

Ankit Saxena  
Leader, Emergency Management

**Enc: Public Awareness Pamphlet**





*Many Islands Pipe Lines (Canada) Limited*

## ***High Pressure Natural Gas Line Safety***

Important public awareness  
information—please review and  
familiarize yourself with this information.



**24-HOUR EMERGENCY CONTACT**

**1-306-777-9800**

## **MIPL Operations**

You have received this information as you live or work near the Many Islands Pipe Lines (Canada) Limited (MIPL) natural gas line system. A wholly owned subsidiary of SaskEnergy Incorporated, MIPL is committed to upholding the highest standard of safety for its employees and the public. SaskEnergy, and its subsidiary TransGas Limited, provide emergency response services to MIPL; employees are trained to recognize and handle emergency situations quickly and correctly.

### ***Why are you being contacted?***

Your safety is important to us. This brochure provides important information so you are educated on, and understand how to protect yourself from, potential emergency situations. You are being contacted so that you are aware of proper emergency response procedures and methods of communication to be used in case of an emergency.

**Leaks rarely occur on our system. However, there are signs you can watch out for that may indicate a possible leak:**



Unusual hissing, whistling or roaring sound



Steam-like cloud visible in the air, or frost like appearance on the ground when the "ambient temperature" is above zero



Dirt blowing up from the ground or bubbling water in wet areas



Discoloured plants or dead/dying vegetation along the pipeline ROW



An odour similar to diesel fuel, light oil or propane



## **HEALTH, SAFETY & ENVIRONMENT**

At MIPL we follow the highest health, safety and environmental standards; providing a workplace that protects our employees, contractors, and the public. We follow strict laws and regulations related to our operations.

MIPL has numerous programs in place to assure our natural gas system runs safely, reliably and with minimal environmental impact. As part of our enhanced safety program, we routinely perform a variety of tests and inspections. This includes surveying for natural gas leaks, both aerial and ground visual inspections of our gas line Right-of-Way (ROW), and emergency response training exercises.

## **NATURAL GAS—POTENTIAL HAZARDS**

Natural gas is composed primarily of methane, but can contain varying amounts of carbon dioxide, ethane, propane and other hydrocarbons. It is an odourless and colourless gas, which is flammable and can present a fire and explosion danger.

Exposure to low levels of natural gas is not harmful to a person's health as methane is non-toxic. In an outdoor environment, natural gas levels are very rarely high enough to be dangerous, as it is lighter than air. In an indoor environment, moderate levels of natural gas in an enclosed or unventilated space can cause headache, shortness of breath, and dizziness. At high levels, natural gas can displace enough oxygen to cause death.

**24-HOUR EMERGENCY CONTACT**

## ***Public Protection Measures: Emergency Procedures***

At any level of emergency, MIPL responders will contact residents within the Emergency Planning Zone (EPZ) to provide an update of the situation, and instructions on which precautions to take. Residents may be advised to shelter-in-place or evacuate if necessary.

During an emergency, roadblocks will be set up around the Emergency Planning Zone to keep traffic out of the hazard area.

## ***Evacuation Procedures***

If it is necessary to evacuate, you will be contacted by telephone. If you require evacuation assistance, have special needs considerations, or if you cannot be contacted, MIPL will dispatch personnel to inform you of the situation directly.

Special needs considerations include residents who may require transportation, residents who do not have a telephone on-site and/or residents that have health or respiratory problems.

The following steps should be followed if "Evacuation" procedures have been implemented:

- Gather all residents and bring any medicines required.
- Turn down furnace thermostats and shut off any air exchange fans to outside.
- Lock all windows and doors.
- Using the route provided, proceed directly to the designated evacuation centre and check in.
- Wait for further instruction.

## ***Shelter-in-Place Procedures***

If you are advised to stay sheltered, do not leave your house or attempt to start any vehicles until a MIPL representative advises you that it is safe to do so. The following steps should be taken if “Shelter-in-Place” procedures have been implemented:

- Immediately gather everyone indoors and stay there until further instruction is received.
- Tightly close windows and outside doors.
- Extinguish indoor wood burning fires and close flue dampers if possible.
- Turn off appliances or equipment that either blow out or use indoor air, such as bathroom/ kitchen fans, clothes dryers and fireplaces.
- Turn off appliances or equipment that draw in outdoor air, such as heating, ventilation and air conditioning systems.
- Avoid using the telephone, except for emergencies, so that you can be contacted by MIPL emergency response personnel—stay tuned to local radio and television for possible information updates.

**If you suspect a problem, please call MIPL’s 24-hour emergency number 1-306-777-9800.**

While the probability of an incident is low, MIPL has a comprehensive Emergency Response Plan in place for this area to protect your safety. If an incident should occur, emergency crews will take immediate steps to minimize the risk to the public, property and the environment.



## ***IMPORTANT CONTACT INFORMATION***

---

### **MIPL Contacts**

#### **Safety & Emergency Management**

Darren Janke.....306-536-2502

#### **24-HOUR MIPL**

#### **EMERGENCY CONTACT**

1-306-777-9800

## ***EMERGENCY CONTACTS***

---

### **Canada Energy Regulator (CER)**

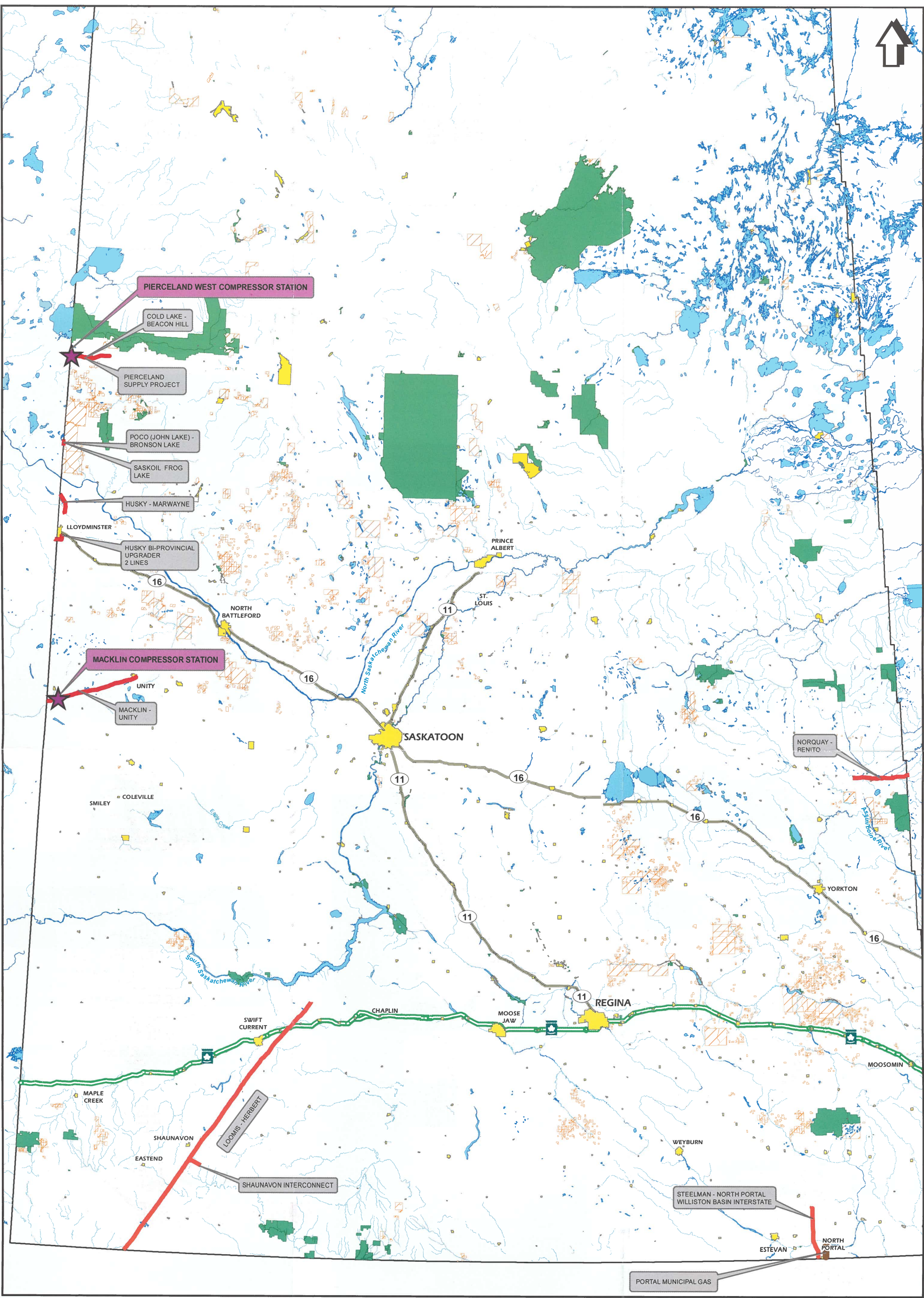
1-403-299-2773

### **Transportation Safety Board of Canada (TSB)**

1-819-997-7887

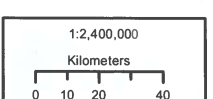
If you're planning a project within 30 metres of the centreline of a high-pressure natural gas transmission line, you must arrange for a free line locate prior to work activity, as a permit may be required.





**LEGEND**

Transportation	Boundary	Pipeline
TransCanada	First Nation Reserve	MIPL Pipeline
Major Road	Park	Portal Municipal Gas Company Canada Inc. Pipeline
Hydrology	Major Cities/Towns	
Waterbodies	Compressor Station	
Streams		



Date: 12/16/2022

Data Source Acknowledgement(s): Adapted from: Information Services Corporation of Saskatchewan

©2020 Sask Energy Incorporated and Subsidiaries. All right reserved respecting the facilities of these companies. 2020 ISC respecting base map product. All right reserved.

©2020 ISC respecting the basemap product. All right reserved.

Attention:  
This confidential data is owned by SaskEnergy, its affiliates or third parties and is provided to you on the following terms: 1) data shall not be disclosed to third parties or used for any other purpose than agreed; 2) data is provided "as is" without warranty or representation of accuracy, timeliness or completeness and is current to date indicated; 3) locations of gas lines are approximate only and you must place a request for exact facility locates to SaskTel/Call Corporation, toll free at 1-866-828-4888 or through www.sasktelcall.com; 4) you agree to indemnify SaskEnergy for any claim for damages that arises out of your improper use or disclosure of the data. For complete listing of terms and conditions attached to and incorporated into SaskEnergy's license and authorization of your use of this data see the following website link: <http://www.saskenergy.com/disclaimer.asp> or <http://www.transgas.com/disclaimer.asp>.