

# 2025 1st Quarter Review

## Transportation

Monty Doonanco – Director, Infrastructure Services





# Snowplowing

- Higher than usual freezing rain events, coupled with extreme fluctuations in temperature have made snowplowing and road maintenance operations challenging this season.
- Our crews stepped up to the challenge and we had our full fleet out on the roads numerous times to ensure roads were passable as quickly as possible.



2025

# ROAD BANS



## Road Bans

- Road bans of 75% went into effect March 24, 2025. All commercial vehicles using M.D. roads at weights over the posted restriction will require a Road Use Agreement.





## Roadside Brushing & Ditch Improvements

- The 2025 Roadside Brushing & Ditch Improvements program got underway with any required derelict fence removed by our crews prior to project start up.
- Contractor is prepared to begin on-site in early April.





# Drainage Improvements

## Ducks Unlimited Drainage (Plan No. 8021836):

- Completed vegetation and debris removal from registered drainage ditch.





## 2025 Road Line Painting

- A Request for Tender was released March 19<sup>th</sup> detailing 245.5 km of various road line barrier types, as well as crosswalks and airport runway and staging area markings.
- The contract is scheduled to be awarded in late April.





## 2025 Asphalt Crack Sealing

- A Request for Tender was released March 18<sup>th</sup> detailing 22.12 km of roadways, as well as subdivision locations, parking areas, walking trails and airport surfaces.
- The contract is scheduled to be awarded mid April.



A black helicopter is parked on a snowy and icy tarmac at Bonnyville Regional Airport. The helicopter's main rotor blades are visible, and the tail boom extends to the right. The background shows airport infrastructure, including a building and a tall tower, under a clear sky. A semi-transparent white box on the right side of the image contains the title and a list of statistics.

## MD of Bonnyville Regional Airport

- Total # of flights in Q1: 343
- # of Medivac flights: 89
- Landing fees charged: \$24,288.00
- Aircraft parking fees charged: \$198.25
- Vehicle parking fees charged: \$1,080.00



A large fleet of yellow Caterpillar construction vehicles, including excavators and bulldozers, are parked in a snowy lot. The scene is set at sunset, with a dramatic sky featuring orange and blue hues. The vehicles are covered in a layer of snow, and the ground is also covered. In the background, there are some structures and a sign. The overall atmosphere is cold and industrial.

# 2025 1st Quarter Review

## **Infrastructure**

Monty Doonanco – Director, Infrastructure Services



A wide-angle photograph of a large, empty industrial building under construction. The structure features a high ceiling with a dark metal truss system and light-colored corrugated metal siding. The floor is a smooth, dark grey concrete. A worker in a blue uniform and white hard hat is visible in the middle ground, using a long-handled tool to work on the floor. To the left, there are some construction materials and equipment. The right side of the image is partially obscured by a semi-transparent white overlay containing text.

## 2024 Design Build of Cherry Grove Firehall & Grader Shop

- Under-slab utilities and drainage have been installed, and main floor slab has been poured.
- Mechanical and electrical work will begin shortly, as well as the construction of interior partition walls.

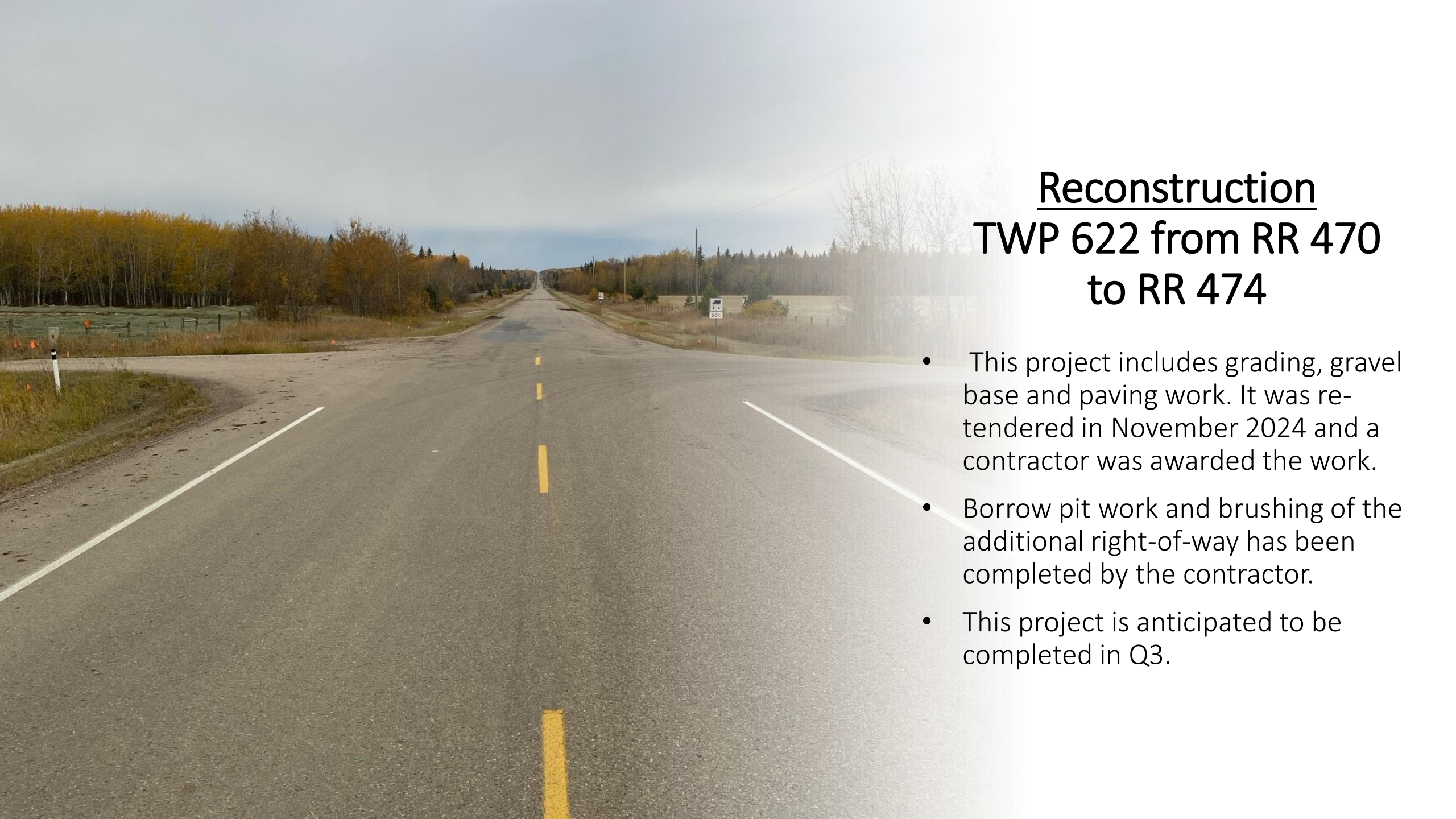




## 2024 Installation of Backup Generators

- Concrete pads and all conduits have been placed for both the Main Administration Building and the Kinosoo Chalet installation locations.
- Delivery of generators were delayed. As a result, the generators will be installed in Q2.





## Reconstruction TWP 622 from RR 470 to RR 474

- This project includes grading, gravel base and paving work. It was re-tendered in November 2024 and a contractor was awarded the work.
- Borrow pit work and brushing of the additional right-of-way has been completed by the contractor.
- This project is anticipated to be completed in Q3.





# Culverts & Bridges

## BF72515 (Truman Bridge: RR 485 North of TWP 630)

- Detailed inspection and engineering assessment was performed after collision. Design for repair is underway.

## BF72749 (TWP 623 East of RR 431)

- Preliminary engineering is underway.

## BF72140 (RR 432 North of TWP 622)

- A 15t restriction has been implemented based on condition assessment and engineer recommendation.





## Water & Sewer

- Fire hydrant pressure testing was performed in Ardmore & Fort Kent. This is performed on a yearly basis.
- Testing provided ideal results and hydrants are operating as they should.





## Purchase: Calcium Sand

- 3048.00 additional tonnes of calcium sand was purchased and hauled into the Public Works yard to be used in winter sanding operations.



# Concerns Received

Transportation & Infrastructure Concerns Logged in 2025					
Category	1st Quarter Jan to Mar	2nd Quarter Apr to Jun	3rd Quarter Jul to Sep	4th Quarter Oct to Dec	Total
Airport	2				2
Brushing	1				1
Culvert	14				14
Dust Control	0				0
Flag	54				54
Flooding	11				11
Hardship	131				131
Industry	0				0
Non-profit	36				36
Online Flags	62				62
Other Concerns	5				5
Repeat Calls	0				0
Road Concerns	67				67
Signs	8				8
Thank you	12				12
Used Culverts	0				0
Utilities	3				3
Windrow	2				2
	408	0	0	0	408



A photograph of a straight, snow-covered road stretching into the distance. The road is flanked by dense forests of bare trees, likely birches, with their white trunks visible. The snow on the road shows tire tracks and shadows from the trees. The sky is a clear, pale blue.

Questions, comments, concerns?